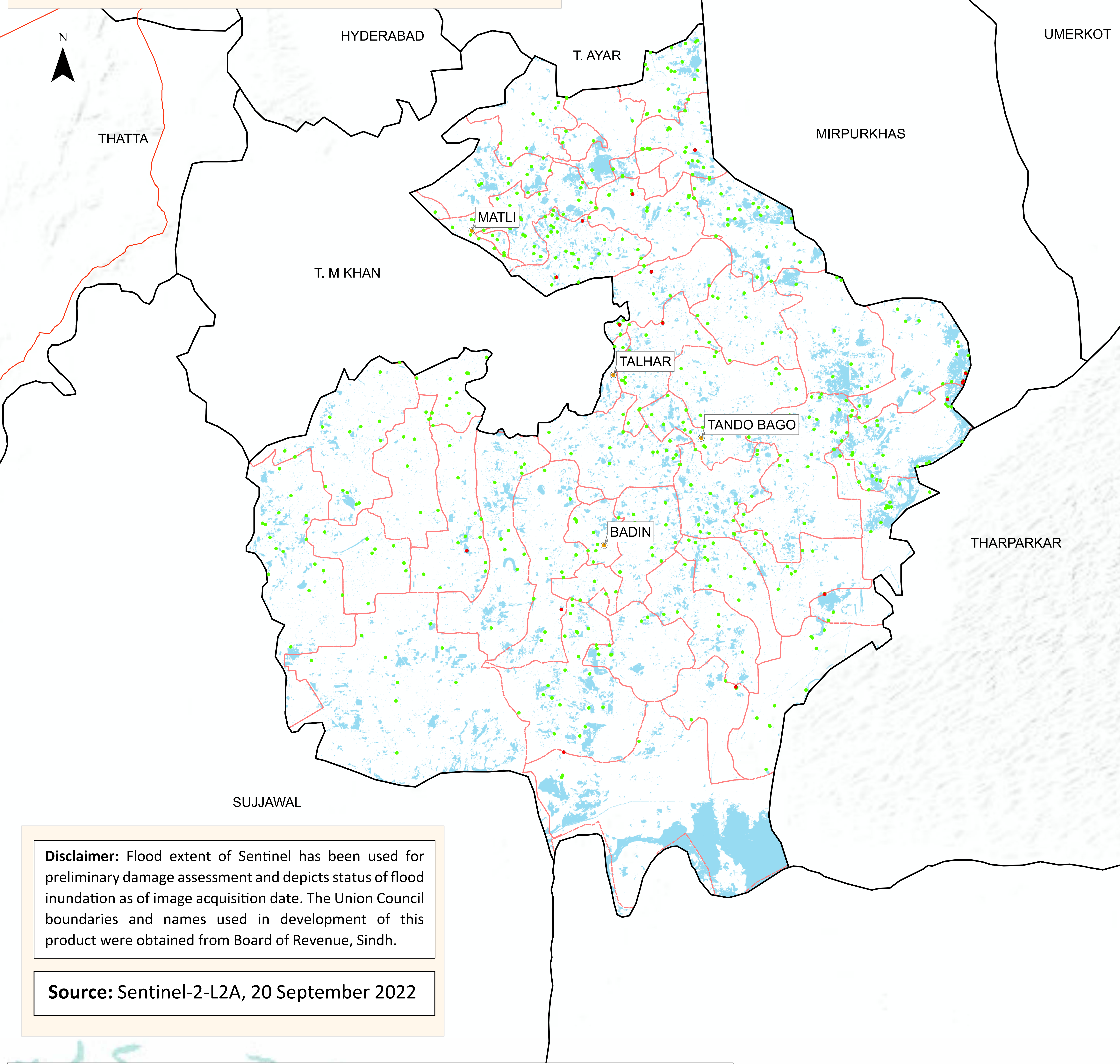


# Flood Inundation in Badin District

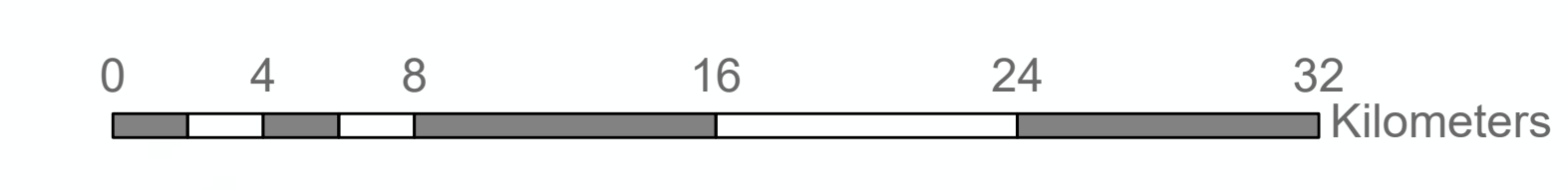


**Disclaimer:** Flood extent of Sentinel has been used for preliminary damage assessment and depicts status of flood inundation as of image acquisition date. The Union Council boundaries and names used in development of this product were obtained from Board of Revenue, Sindh.

**Source:** Sentinel-2-L2A, 20 September 2022

District Profile			
	21/08/2022	20/09/2022	Change
District Area	6,470 Sq.Km		
Area Inundated	2,656.16 Sq.Km 41.05%	688.09 Sq.Km 10.63%	-1,968.07
Crop Land	1,270,209.25 Acres		
Crop Land Inundated	589,882.95 Acres 46.44%	81,438.66 Acres 6.42%	-508,444.29
Rainfall (Jul-Aug)	538 mm		
Population (as per 2017 Census)	1,721,289		
Affected Union Councils	47 Out of 47	42 out of 47	

UC-wise Affected Villages						
Name	Submerged in Water			Surrounded by Water		
	21/08/2022	20/09/2022	Change	21/08/2022	20/09/2022	Change
ABDULLAH SHAH	2	-	-2	53	7	-46
AHMED RAJO	2	-	-2	40	9	-31
BADIN 01	-	-	0	4	-	-4
BADIN 02	3	-	-3	31	9	-22
BADIN 03	4	-	-4	22	3	-19
BHUGRA MEMON	1	1	0	27	3	-24
BUDHO QAMBRANI	1	-	-1	20	21	+1
CHABRALO	9	-	-9	59	10	-49
DADHA	3	-	-3	28	8	-20
DEI JARKAS	1	1	0	40	16	-24
DUBI	14	-	-14	61	14	-47
DUMBALO	2	1	-1	16	19	+3
GHULAM SHAH LAGHARI	-	-	0	9	4	-5
HAJI SANWAL	9	2	-7	81	27	-54
HALE POTA	-	-	0	12	22	+10
KADHAN	-	1	+1	23	3	-20
KADI KAZIA	6	1	-5	48	9	-39
KARIO	20	-	-20	48	16	-32
KHADHARO	-	-	0	32	9	-23
KHALIFO QASIM	3	-	-3	90	27	-63
KHOR WAH	17	-	-17	69	18	-51
KHOSKI	2	-	-2	45	12	-33
LUNWARI SHARIF	3	-	-3	37	9	-28
MALHAN	4	-	-4	49	23	-26
MANIK LAGHARI	-	-	0	46	10	-36
MATLI 01	-	-	0	12	12	0
MATLI 02	2	-	-2	11	4	-7
MOHAMMAD KHAN BHURGRI	5	-	-5	72	13	-59
NINDO SHAHAR	-	-	0	40	11	-29
PANGRIO	3	1	-2	28	22	-6
PEHAR MARI	8	-	-8	55	15	-40
PERO LASHARI	17	-	-17	73	15	-58
PHARKARA	6	-	-6	61	9	-52
RAJO KHANANI	3	4	+1	32	10	-22
RAKHI	13	-	-13	28	7	-21
S.F.RAHU	4	-	-4	26	9	-17
SAEEDPUR	11	1	-10	48	18	-30
SEERANI	4	-	-4	73	21	-52
TALHAR	1	-	-1	9	2	-7
TANDO GHULAM ALI	-	-	0	11	5	-6
TANDOBAGO	4	-	-4	34	12	-22
TARAI	13	1	-12	55	11	-44
THARI	4	1	-3	55	21	-34
Total	204	15	-189	1,713	525	-1,188



- Cities/Towns
- Union Councils
- Villages (As Per 20-09-2022)
- Highways
- Submerged under Water
- Flood Water
- Surrounded by Water

Sources: Esri, USGS, NOAA, Sources: Esri, Garmin, USGS, NPS